



ACCESS GUIDE



Welcome!

We are so excited for you to join us at The Theatre Centre for 'Sit Down Comedy Show'! Below is some helpful information about the show and the theatre to help prepare you for your visit.

THE SHOW

'Sit Down Comedy Show' is a comedy show presented by The Disability Collective, featuring Deaf and disabled comedians Ken Hall, Rosani Christy, Robert Haughton, and Michael McCreary, hosted by Courtney Gilmour. Taking place on Thursday, February 20th at 8 PM at The Theatre Centre, this event promises to be a night of non-stop laughter, celebrating the comedic talents and unique perspectives of the disability community.

RUN TIME

About 90 minutes with no intermission.

EXITING AND RE-ENTERING

Audience members are welcome to exit and re-enter the space whenever they need throughout the show.

MASKS

Masks are required for all audience members and will be available in the lobby. Exemptions are always made for access or medical reasons.



CONTENT WARNINGS

- Ableism
- Discrimination
- Microaggressions
- Racism
- Sexual content
- Mention of Religion

If you would like to further review the content of the show, click the link below to view our comedians scripts.

[Sit Down Comedy Script](#)



TIPS!

- We encourage you to laugh and cheer throughout the evening, but it is absolutely not required!
- Our comedians may interact with audience members! Feel free to engage or not, but know that if you are closer to the stage, you will have a higher chance of getting a little shout-out! Our comedians are aware that there may be folks in the audience who aren't interested in interacting and will be mindful.
- Heckling will not be tolerated at our event! We understand that some jokes are not for everyone, and you may even feel inclined to yell out some funny remarks toward our comedians; however, we ask that you leave the jokes to the comedians to maintain a safe and fun space for everyone. For more information, please see our Safe Spaces & Anti-Harassment Policy at thedisabilitycollective.com/safespaces.
- The bar just outside in the lobby and the café on the lower level will be open throughout the show. Feel free to grab a drink or a snack and come and go as you need!



ACCESS FEATURES

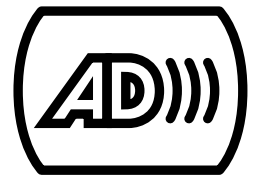
DEAF INTERPRETATION

Deaf Interpretation by Phoenix the Fire featuring Gaitrie Persaud and Nancie Anderson. ASL volunteers will be available throughout the space should you require assistance.



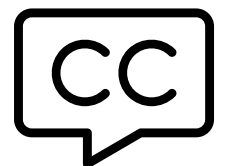
AUDIO DESCRIPTION

Live audio description from describer JJ Hunt with consultation from Christine Malec. Pre-show notes including tips on how to interact with comedy will be made available prior to the event. Sighted guides will be available throughout the theatre.



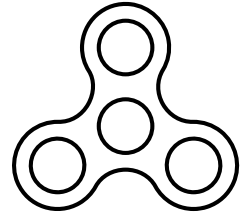
CAPTIONS

Live open captions provided by Canadian Hearing Services will be projected throughout the show.



RELAXED ENVIRONMENT

Audiences are welcome to make noise, fidget move about and exit and re enter the space as they wish. Fidget toys and ear plugs will be available at the access table.



ACCESS KIT

An Access Kit will be available at The Disability Collective table in the lobby. This kit will be stocked with:

- Fidget toys
- Earplugs
- Magnifying sheets
- A whiteboard and markers
- Copies of the Access and Venue Guides
- Weighted lap pads



And more!

To reserve an audio description device, request a sighted guide, reserve a seat close to the stage or the interpreters or for any other access questions or requests, email ali@thedisabilitycollective.com.

PERFORMERS



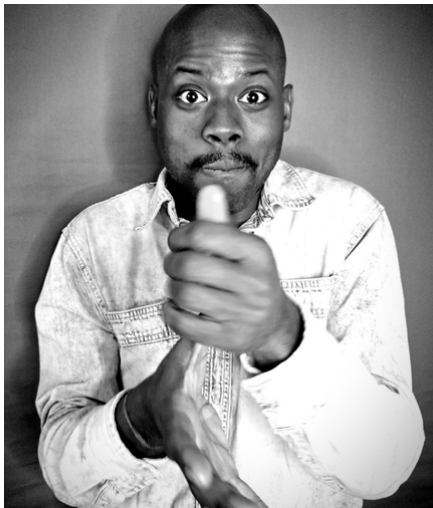
Courtney Gilmour



Ken Hall



Michael McCreary



Robert Haughton



Rosani Christy

VOLUNTEERS

Our volunteers and staff will be located throughout the space and will be more than happy to assist you or answer any questions you may have. We will have English-speaking and ASL volunteers/interpreters as well as sighted guides available. All staff members and volunteers will be wearing lanyards that look like this:



ARRIVING

The theatre is located on the south side of Queen Street West between Lisgar Street and Dovercourt Road. There is one primary entrance just off of Lisgar Street, accessible by a few steps or a ramp.



BOX OFFICE AND CAFÉ

As you enter the lobby, the box office (36" high) will be to your left should you need to pick up or purchase tickets and in front of you will be the lovely community café. The café is set up with comfortable places to sit. You are welcome to grab a beverage or snack to enjoy before the show or take into the theatre.



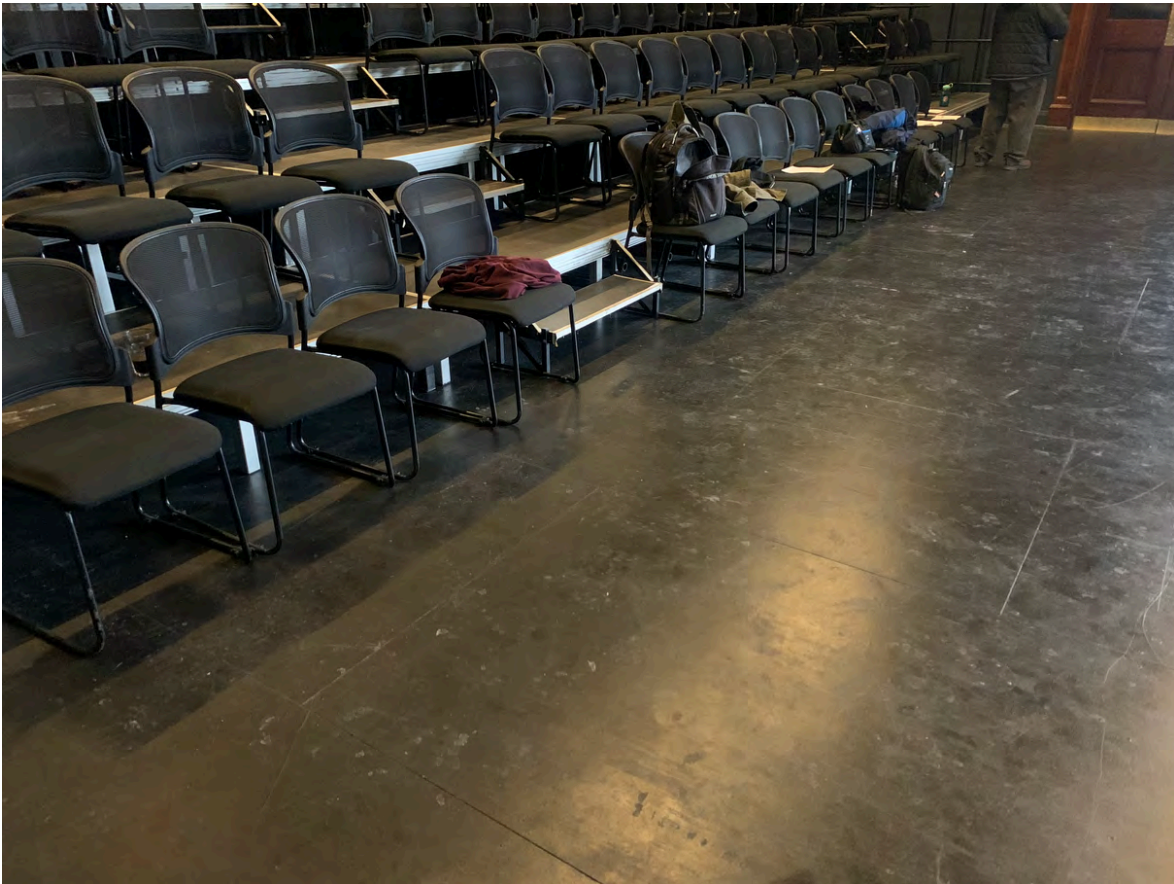
THE THEATRE

The theatre is on the third floor and is accessible by stairs or lift. It has raked seating and the stage is level with the front row of the audience. Upon entering the theatre, you will be at the bottom of the raked seating and the stage will be to your right. It is general admission so feel free to choose any seat that you'd like! Each chair is about 18" wide and has no arms.



ACCESSIBLE SEATING

Accessible seating will be available in the first two rows on the ground level of the theatre. Seats for d/Deaf audience members will be reserved on the far side of the theatre in front of interpreters and seats for Blind and Low Vision audience members will be reserved in the front row. Please include your access needs in the notes of your ticket order so that we can anticipate your needs with priority and reserved seating.





We can't wait for you to join us!

If you have any questions, please don't
hesitate to reach out to our team at

The Disability Collective:

team@thedisabilitycollective.com

ali@thedisabilitycollective.com